

## Displays

(10 Person Minimum)

### Deli Tray

\$18.95 per person

Roast Turkey, Corned Beef, Brisket or Rare Roast Beef, Swiss and Cheddar Cheese, Potato Salad, Cole Slaw, Rye, 7 Grain Bread & Challah Rolls, Tomatoes, Pickles, Mayo & Mustard

### Wraps Tray

\$18.95 per person

Assorted Wraps consisting of our Specialty Sandwiches, Macaroni Salad, Potato Chips, Pickles, Assorted Pastries

### Crispy French Toast with Chantilly Creme & Fresh Strawberries

\$10.95 per person

### Mediterranean Table

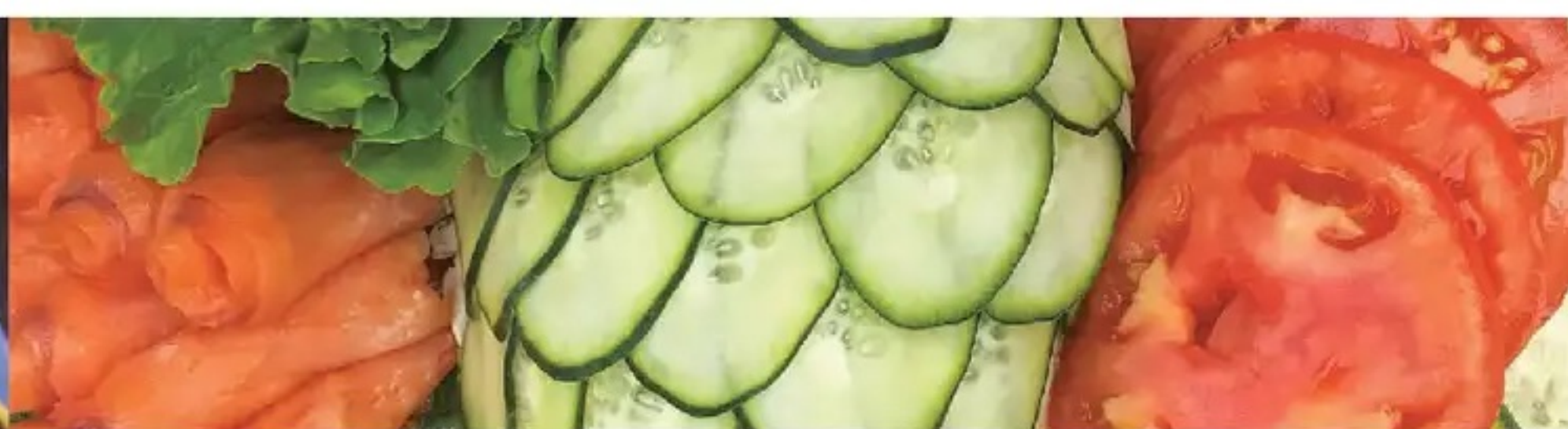
\$11.95 per person

Falafel Patties, Roasted Red Pepper Hummus, Grilled Eggplant Salad, Chopped Cucumber & Tomato Salad w/ Feta, Mixed Olive Salad, Tzatziki, Shredded Lettuce, Warmed Pita Bread & Oven Toasted Pita Chips

### Crudite Tray or Cups

\$6.95 per person

Broccoli, Carrots, Colored Peppers, Celery, Grape Tomatoes & Asparagus, Served with Hummus or Buttermilk Ranch



(10 Person Minimum)

### Fruit Display

\$8.95 per person

Cantaloupe, Honeydew Melon, Pineapple, Strawberries and Red Seedless Grapes

### Dairy Tray

\$22.95 per person

Sliced Nova, Whitefish Salad, Tuna Salad, Muenster & Swiss Cheese, Chive & Plain Cream Cheese, Tomatoes, Cucumber, Onion & Fresh Baked Bagels



## Dinners

All dinners come with Salad, Entree, Two Sides, Dinner Rolls & Dessert (except pasta dinners)

**\$19.95 per person**

Lasagna, Baked Ziti with Bolognese or Mama's Pasta. Served with Salad, Garlic Bread & Dessert

**\$23.95 per person**

Gibby's Roast Chicken with Potatoes, Carrots and Onions in Garlic & White Wine

Chicken Marsala

Chicken Parmesan

Chicken Francaise

Meatloaf with Roasted Tomato Gray

Salmon Cakes

**\$25.95 per person**

Roast Brisket, Short Ribs of Beef,

Grilled Salmon, Tilapia

### Choice of Sides

Mashed Potatoes, Mac & Cheese, Roasted Sweet Potatoes, Basmati Rice, Roasted Vegetables, String Beans, Asparagus, Roasted Brussel Sprouts & So Much More

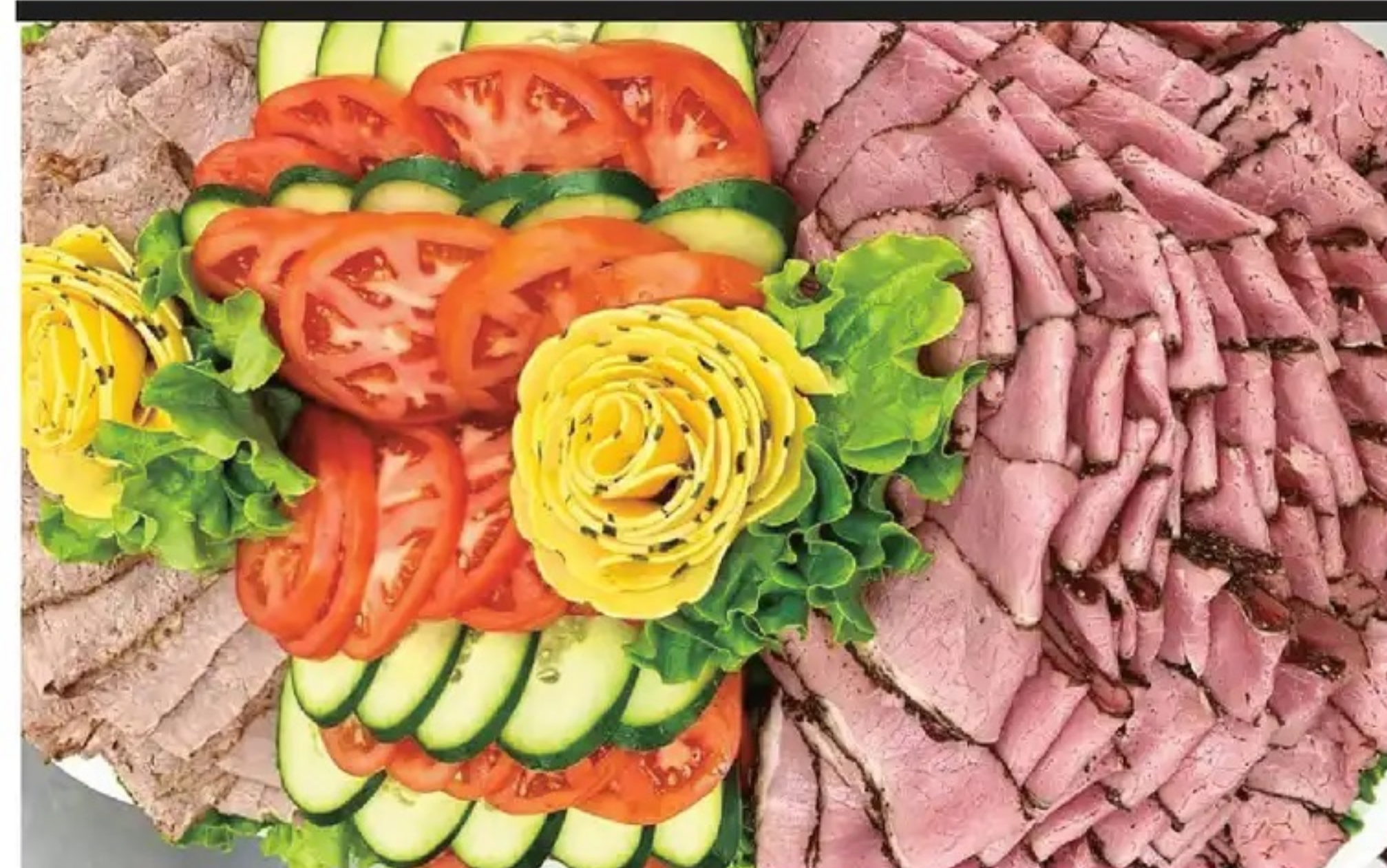
## A La Carte The Girls Euro Salad

\$6.50 per person

Fresh Euro Greens, Glazed Pecans, Crumbled Goat Cheese, Fresh Strawberries, Grape Tomatoes & Granny Smith Apples drizzled with Blush Wine Vinaigrette & Topped with French Fried Onion Straws

## Gift Cards, Credits & Baskets

Liquor Department  
Open 7 Days





## Desserts

### Sour Cream Coffee Cake

1/4 Sheet \$55 / Serves 15

### Eclairs

\$6.50 each

### Rainbow Cake

\$39.95 / Jelly or Chocolate

### Pastry Trays

Assorted Mini Pastries which may include Black Bottoms, Pecan Bars, Lemon Bars, Brownies, Cupcakes, Cheesecakes with Fruit Topping

\$19.99 dz / 3 dz minimum

### Fruit Trays

\$8.95 per person

Cantaloupe, Honeydew Melon, Pineapple, Strawberries and Red Seedless Grapes

### Always Available for Order

10" Layer Cakes:

Pimlico, Raspberry, Amaretto, Country Carrot, Coconut & Red Velvet

Cheesecakes: Apple Pie, Black Bottom, Chocolate Covered

Smith Island Cake, Sour Cream Coffee Cake... *and So Much More!*



## What is Shiva?

Shiva is a time for mourners to express their sorrow and offer comfort upon the passing of a loved one. After the funeral, mourners "sit" Shiva at the home of the deceased for a period of seven days. During that time, visitors often provide food to the bereaved to free them from cooking.

At Gourmet Girls, we bring over 45 years of experience in helping families manage Shiva in their time of need and comfort. Our specialist can guide you through a step by step process in overseeing the ordering and delivering of food.

In addition, we will provide the family with a list of names of all those who contributed as well as any personal messages and addresses for acknowledgment.

Gourmet Girls also offers meal and sympathy baskets to gatherings of all faiths. We will gladly assist in coordinating and preparing meals so that the family is insured to have fresh food delivered daily. Our coordinator can assist in staffing assistance in food set up, service and clean up. We have a staff of professional and skilled servers that can help make a very difficult time a little easier.

We are pleased to announce we have a comfortable and private place to meet family and friends for any gathering.

Our "Gathering Place" has been created with you in mind, should you choose to do so outside your home. We cater to your needs during this time of mourning.

Please contact our Coordinator to arrange room availability and meal planning!  
410.581.4914



## Shiva and Expressions of Condolence



P 410.581.4914 F 410.581.4916

GGGirlsOrders@gmail.com

[www.GourmetGirlsMD.com](http://www.GourmetGirlsMD.com)

3713 Old Court Road, Pikesville, MD 21208